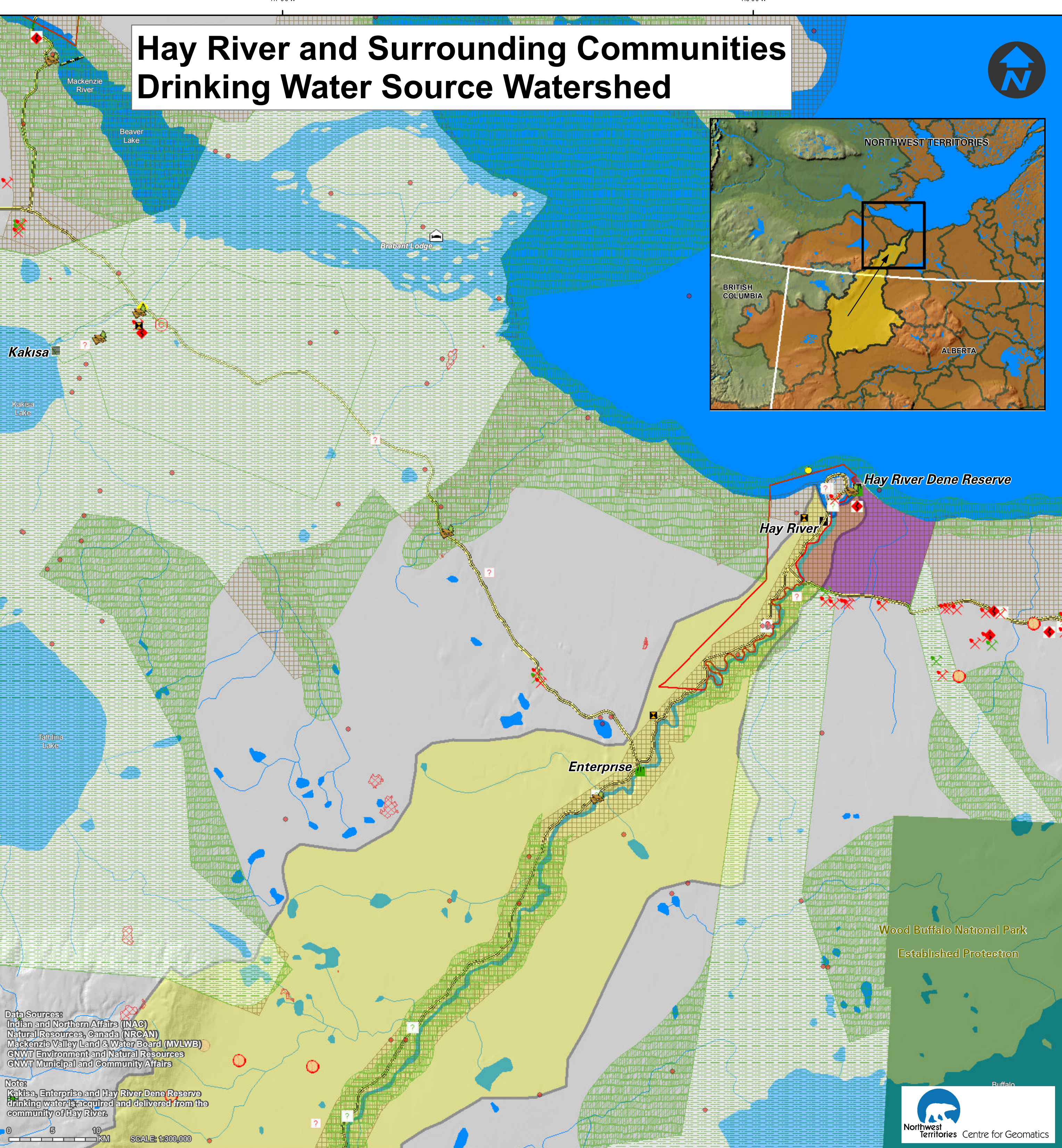
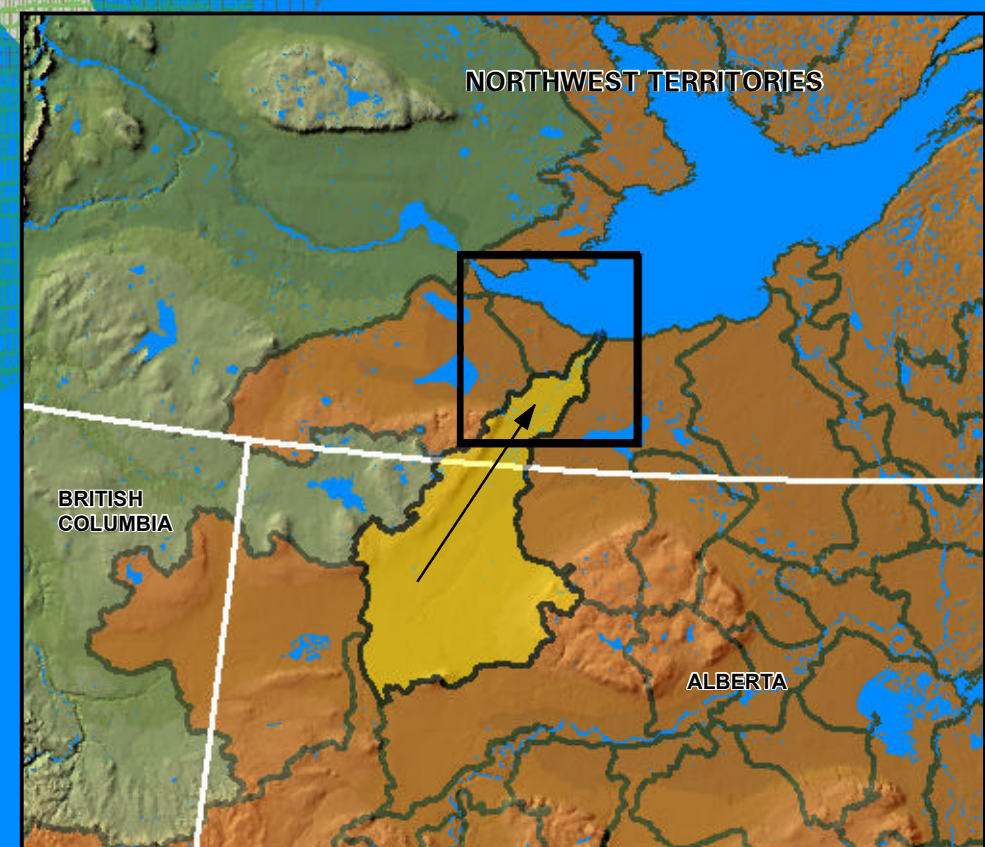


Hay River and Surrounding Communities Drinking Water Source Watershed



Data Sources:
Indian and Northern Affairs (INAC)
Natural Resources, Canada (NRCA)
Mackenzie Valley Land & Water Board (MVLWB)
GNWT Environment and Natural Resources
GNWT Municipal and Community Affairs

Notes:
Kakisa, Enterprise and Hay River Dene Reserve
drinking water is acquired and delivered from the
community of Hay River.

Community Drinking Water *Community Source Watershed Upstream Watershed Areas Flow Direction Community Water Intake Locations Waste Water and Sewage Outflow	Mining Developments As of November, 2009 Non Producing Producer Active Mineral Tenure As of August, 2011 Mining Leases Mining Claims Prospecting Permits	Oil and Gas Well Sites Status as of July, 2010: Non Producing Producer Oil and Gas Rights Status as of April, 2011 Exploration Licence Production Licence Significant Discovery Licence Oil and Gas Pipelines Existing Pipeline	Tourism Lodges Territorial Park Territorial Park Area Forest Fires Fires 2000-2010	Development and Activities As of June, 2011: Communications-Not Active Miscellaneous -Active Miscellaneous-Not Active Municipal-Active Oil and Gas-Active Oil and Gas-Not Active Pipeline-Active	Conservation Areas and Interim Measures Agreement Land Withdrawals Established Protected Areas Proposed Protected Areas with Interim Land Withdrawal Proposed Protected Areas No Land Withdrawal Approved Land Use Plan Conservation Zones Draft Land Use Plan Conservation Zones Interim Measures Agreement Land Withdrawals	Base Data Community Boundary Ferry Crossing Highway Winter First Nation Reserves
--	--	--	---	---	--	--

*Community Source Watersheds: Each community's drinking water source watershed was mapped at a scale of 1:250,000. Information from Satellite imagery, 1:250,000 and 1:50,000 scale topographic data and the National Scale Frameworks Hydrology - Drainage Network data (1:1,000,000 scale) were used to create this new dataset.

**For this layer only those items found within the map extents are displayed in the legend.

If you have any questions, or would like more information please contact:
Erin Kelly, Manager, Watershed Programs and Partnerships
Land & Water Division, Environment and Natural Resources
Government of the Northwest Territories
P.O. Box 1320, Yellowknife, NT X1A 2L9
Phone: 867-920-3258 Fax: 867-873-4229 Email: erin_kelly@gov.nt.ca

This Map was produced by the NWT Centre for Geomatics, is not a legal description and is meant for visualization purposes only.
NWTCC Project ID: MXD-192. September 28, 2011.