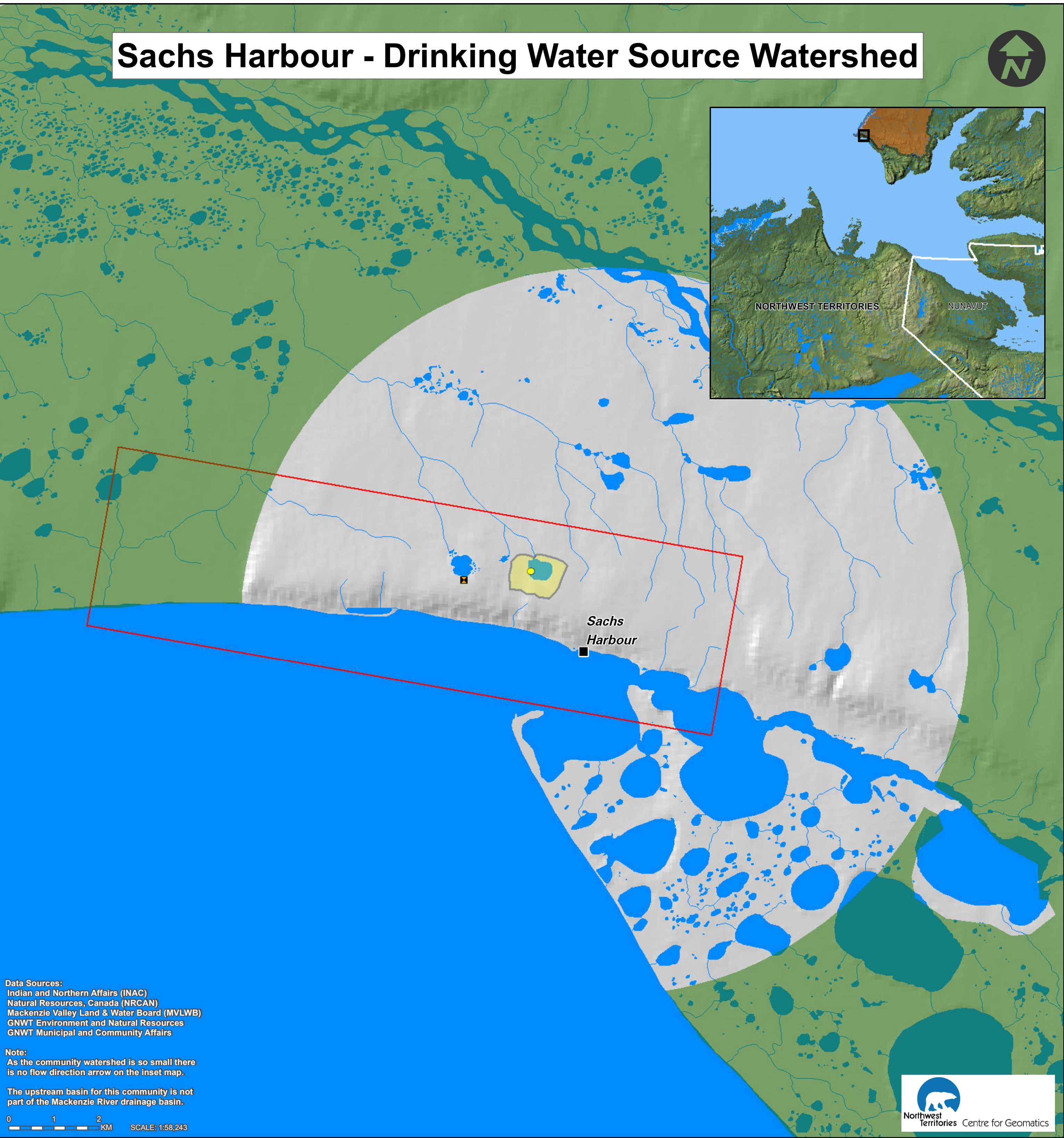


Sachs Harbour - Drinking Water Source Watershed



Data Sources:
Indian and Northern Affairs (INAC)
Natural Resources, Canada (NRCAN)
Mackenzie Valley Land & Water Board (MVLWB)
GNWT Environment and Natural Resources
GNWT Municipal and Community Affairs

Note:
As the community watershed is so small there is no flow direction arrow on the inset map.

The upstream basin for this community is not part of the Mackenzie River drainage basin.

0 1 2 KM SCALE: 1:58,243



Community Drinking Water

- *Community Source Watershed
- Upstream Watershed Areas
- Community Water Intake Locations
- Waste Water and Sewage Outflow

Mining Developments

As of November, 2009

- Non Producing
- Producer

Active Mineral Tenure

As of August, 2011

- Mining Leases
- Mining Claims
- Prospecting Permits

Oil and Gas Well Sites

Status as of July, 2010:

- Non Producing
- Producer

Oil and Gas Rights

Status as of April, 2011

- Exploration Licence
- Production Licence
- Significant Discovery Licence

Oil and Gas Pipelines

- Existing Pipeline
- Territorial Park Area
- Territorial Park

Tourism

- Lodges

Forest Fires

- Fires 2000-2010

Development and Activities

As of June, 2011:**

Conservation Areas and Interim

Measures Agreement Land Withdrawals

- Established Protected Areas
- Proposed Protected Areas with Interim Land Withdrawal
- Proposed Protected Areas No Land Withdrawal
- Approved Land Use Plan Conservation Zones
- Draft Land Use Plan Conservation Zones
- Interim Measures Agreement Land Withdrawals

Base Data

- Community Boundary
- Ferry Crossing
- First Nation Reserves

*Community Source Watersheds: Each community's drinking water source watershed was mapped at a scale of 1:250,000. Information from Satellite imagery, 1:250,000 and 1:50,000 scale topographic data and the National Scale Frameworks Hydrology - Drainage Network data (1:1,000,000 scale) were used to create this new dataset.

**For this layer only those items found within the map extents are displayed in the legend.

If you have any questions, or would like more information please contact:
Erin Kelly, Manager, Watershed Programs and Partnerships
Land & Water Division, Environment and Natural Resources
Government of the Northwest Territories
P.O. Box 1320, Yellowknife, NT X1A 2L9
Phone: 867-920-3258 Fax: 867-873-4229 Email: erin_kelly@gov.nt.ca

This Map was produced by the NWT Centre for Geomatics, is not a legal description and is meant for visualization purposes only.
NWTCS Project ID: MXD-208, December 1, 2011.