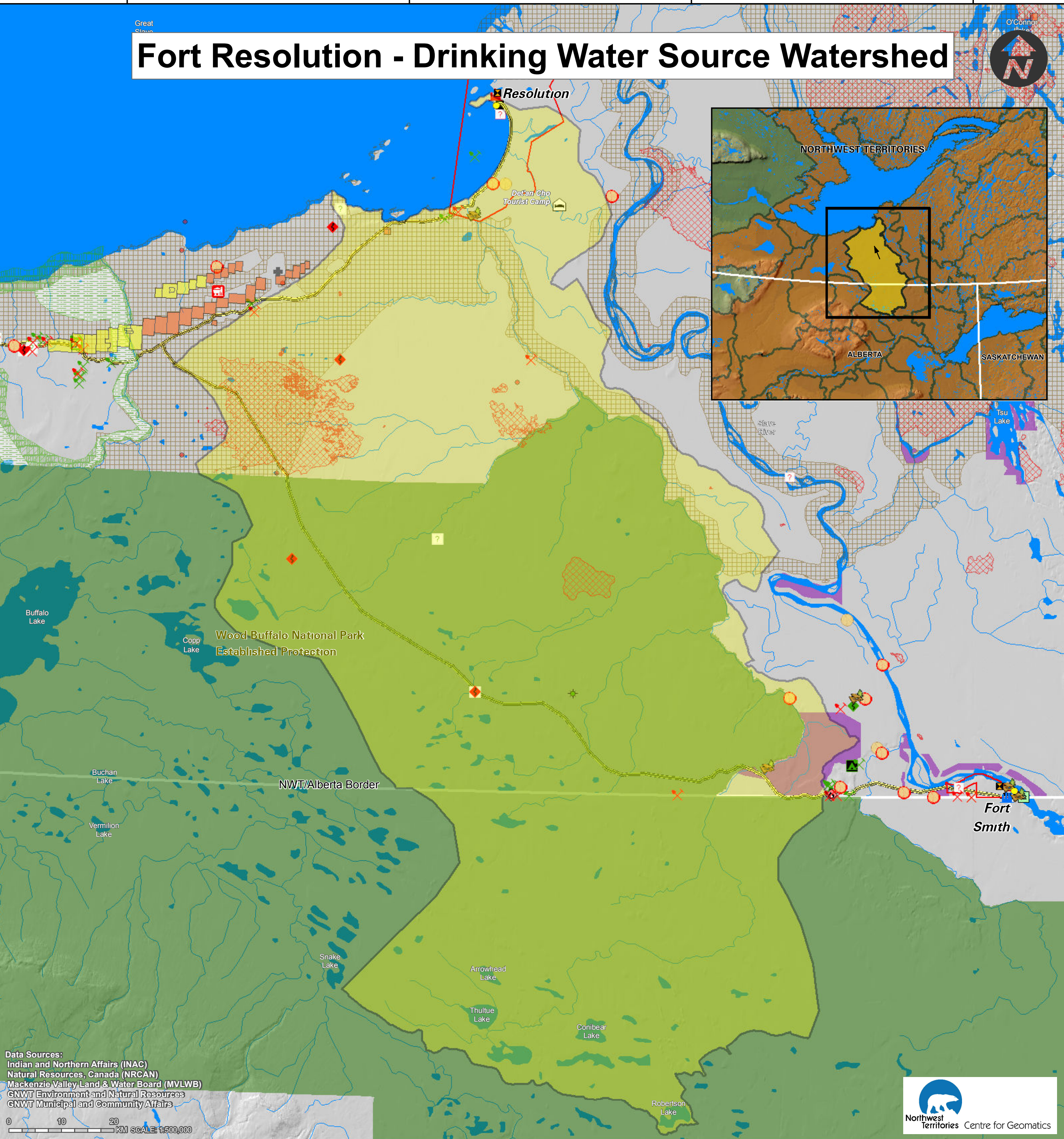
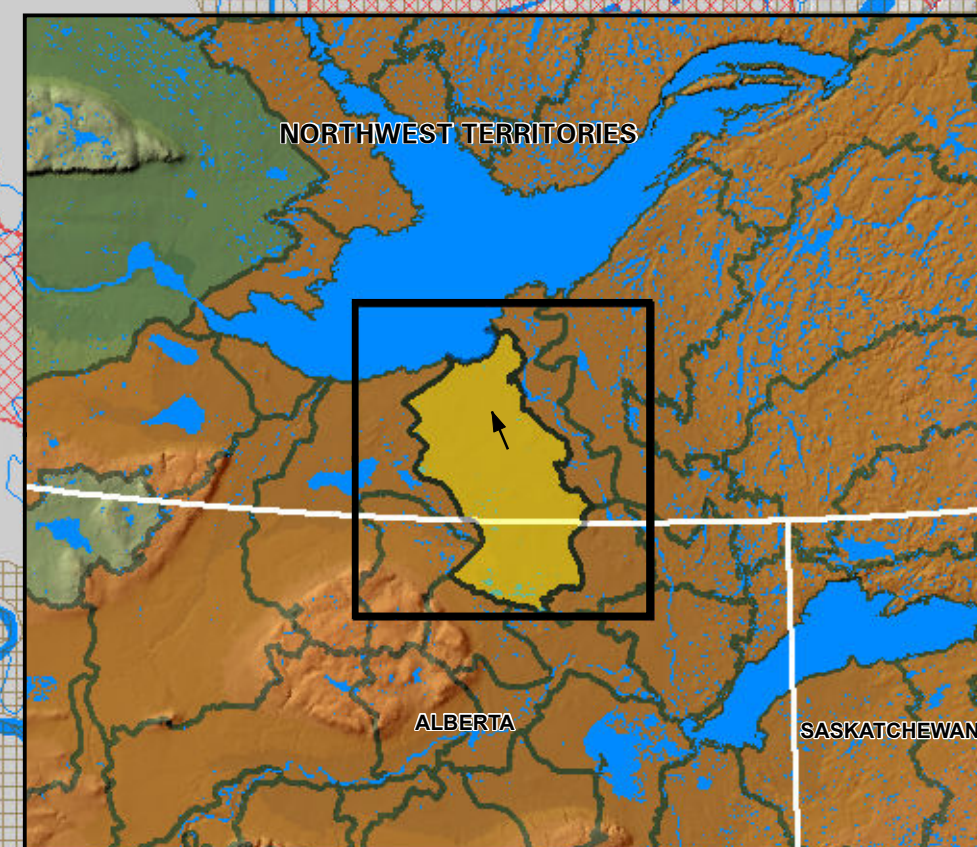


Fort Resolution - Drinking Water Source Watershed



Data Sources:
Indian and Northern Affairs (INAC)
Natural Resources Canada (NRCAN)
Mackenzie Valley Land & Water Board (MVLWB)
GNWT Environment and Natural Resources
GNWT Municipal and Community Affairs

0 10 20
KM SCALE 1:500,000



Community Drinking Water

- *Community Source Watershed
- Upstream Watershed Areas
- Flow Direction
- Community Water Intake Locations
- Waste Water and Sewage Outflow

Mining Developments

As of November, 2009

- Non Producing
- Producer

Active Mineral Tenure

As of August, 2011

- Mining Leases
- Mining Claims
- Prospecting Permits

Oil and Gas Well Sites

Status as of July, 2010:

- Non Producing
- Producer

Oil and Gas Rights

Status as of April, 2011

- Exploration Licence
- Production Licence
- Significant Discovery Licence

Oil and Gas Pipelines

- Existing Pipeline

Tourism

- Lodges
- Territorial Park
- Territorial Park Area
- Forest Fires
- Fires 2000-2010

Development and Activities

As of June, 2011.**

- Camp-Active
- Mining Exploration-Active
- Mining Exploration-Not Active
- Miscellaneous -Active
- Miscellaneous-Not Active
- Municipal-Active
- Municipal-Not Active
- Municipal-Under Review
- Oil and Gas-Active
- Pipeline-Active
- Quarrying-Active
- Quarrying-Not Active
- Road Private-Active
- Road Private-Not Active
- Road Public-Not Active
- Staging Area-Not Active
- Woods Operations-Active
- Woods Operations-Not Active

Conservation Areas and Interim

Measures Agreement Land Withdrawals

- Established Protected Areas
- Proposed Protected Areas with Interim Land Withdrawal
- Proposed Protected Areas No Land Withdrawal
- Approved Land Use Plan Conservation Zones
- Draft Land Use Plan Conservation Zones
- Interim Measures Agreement Land Withdrawals

Base Data

- Community Boundary
- Highway
- Ferry Crossing
- First Nation Reserves

*Community Source Watersheds: Each community's drinking water source watershed was mapped at a scale of 1:250,000. Information from Satellite imagery, 1:250,000 and 1:50,000 scale topographic data and the National Scale Frameworks Hydrology - Drainage Network data (1:1,000,000 scale) were used to create this new dataset.

**For this layer only those items found within the map extents are displayed in the legend.

If you have any questions, or would like more information please contact:
Erin Kelly, Manager, Watershed Programs and Partnerships
Land & Water Division, Environment and Natural Resources
Government of the Northwest Territories
P.O. Box 1320, Yellowknife, NT X1A 2L9
Phone: 867-920-3258 Fax: 867-873-4229 Email: erin_kelly@gov.nt.ca

This Map was produced by the NWT Centre for Geomatics, is not a legal description and is meant for visualization purposes only.
NWTG Project ID: MXD-190, November 14, 2011.