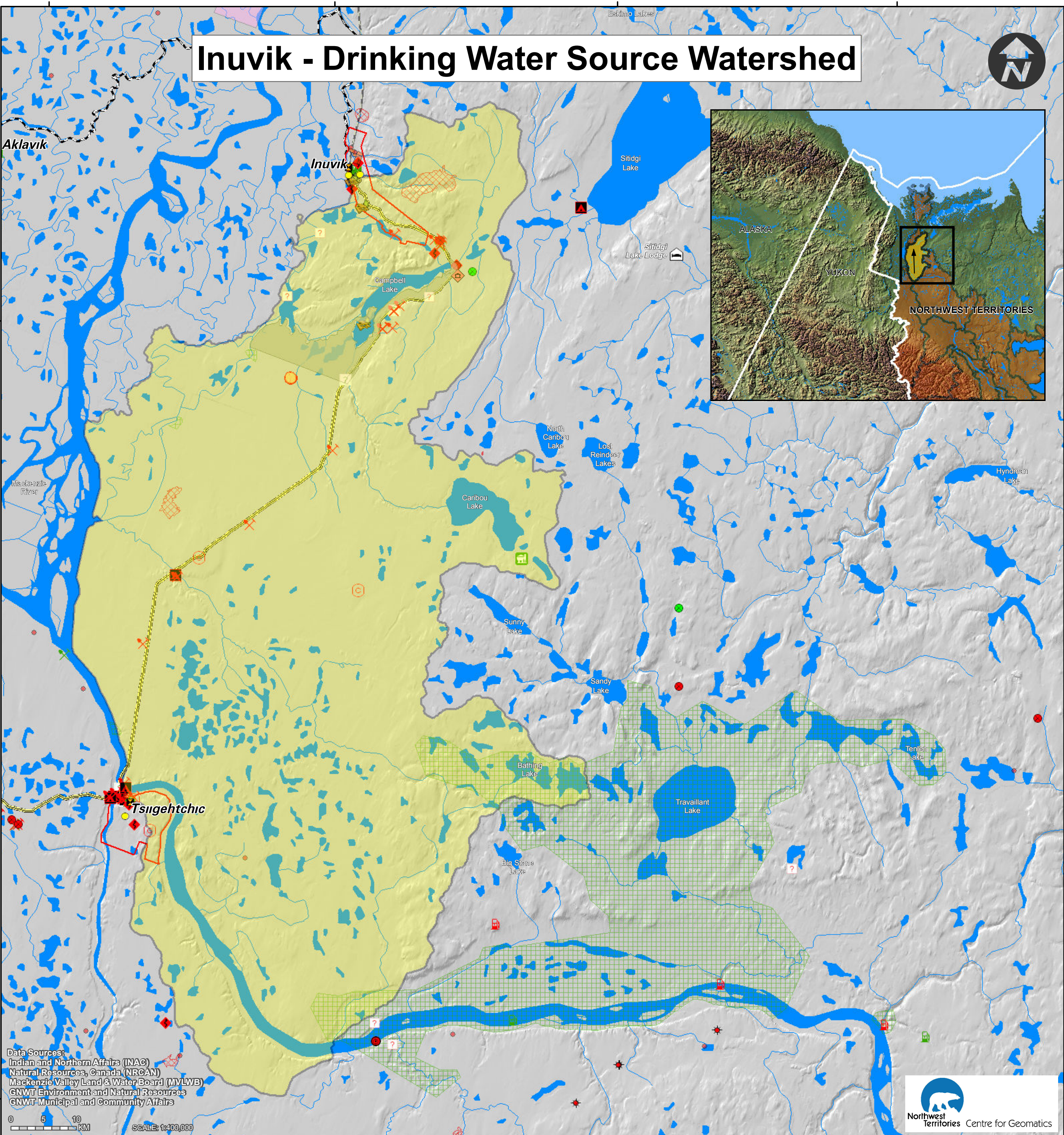
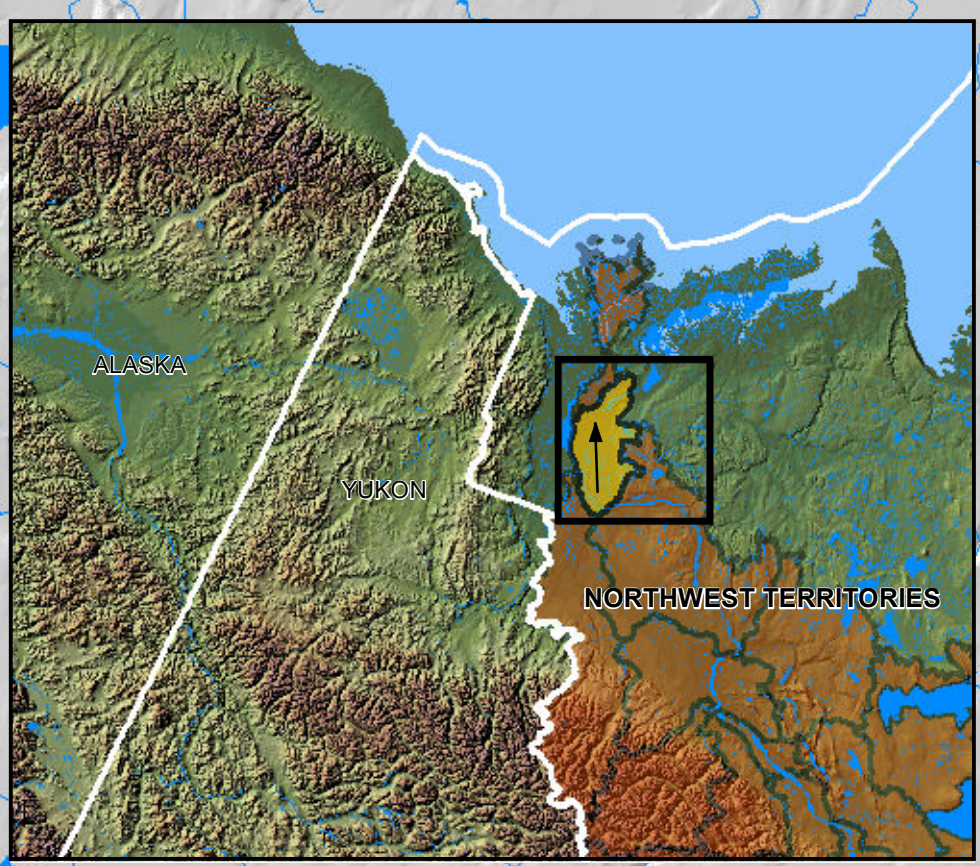


Inuvik - Drinking Water Source Watershed



Data Sources:
 Indian and Northern Affairs (INAC)
 Natural Resources, Canada (NRCAN)
 Mackenzie Valley Land & Water Board (MVLWB)
 GNWT Environment and Natural Resources
 GNWT Municipal and Community Affairs



<p>Community Drinking Water</p> <ul style="list-style-type: none"> *Community Source Watershed Upstream Watershed Areas Flow Direction Community Water Intake Locations Waste Water and Sewage Outflow 	<p>Mining Developments As of November, 2009</p> <ul style="list-style-type: none"> Non Producing Producer <p>Active Mineral Tenure As of August, 2011</p> <ul style="list-style-type: none"> Mining Leases Mining Claims Prospecting Permits 	<p>Oil and Gas Well Sites Status as of July, 2010:</p> <ul style="list-style-type: none"> Non Producing Producer <p>Oil and Gas Rights Status as of April, 2011</p> <ul style="list-style-type: none"> Exploration Licence Production Licence Significant Discovery Licence <p>Oil and Gas Pipelines</p> <ul style="list-style-type: none"> Existing Pipeline 	<p>Tourism</p> <ul style="list-style-type: none"> Lodges Territorial Park Territorial Park Area <p>Forest Fires</p> <ul style="list-style-type: none"> Fires 2000-2010 	<p>Development and Activities As of June, 2011:**</p> <ul style="list-style-type: none"> Camp-Not Active Communications-Not Active Fuel Storage-Active Fuel Storage-Not Active Geotechnical-Active Geotechnical-Not Active Mining Exploration-Active Miscellaneous -Active Miscellaneous-Not Active Municipal-Active 	<ul style="list-style-type: none"> Municipal-Not Active Oil and Gas-Not Active Pipeline-Not Active Quarrying-Active Quarrying-Not Active Road Private-Not Active Road Public-Active Road Public-Not Active Seismic-Active Seismic-Not Active Woods Operations-Not Active 	<p>Conservation Areas and Interim Measures Agreement Land Withdrawals</p> <ul style="list-style-type: none"> Established Protected Areas Proposed Protected Areas with Interim Land Withdrawal Proposed Protected Areas No Land Withdrawal Approved Land Use Plan Conservation Zones Draft Land Use Plan Conservation Zones Interim Measures Agreement Land Withdrawals 	<p>Base Data</p> <ul style="list-style-type: none"> Community Boundary Highway Winter Ferry Crossing First Nation Reserves
--	---	--	--	--	---	--	--

*Community Source Watersheds: Each community's drinking water source watershed was mapped at a scale of 1:250,000. Information from Satellite imagery, 1:250,000 and 1:50,000 scale topographic data and the National Scale Frameworks Hydrology - Drainage Network data (1:1,000,000 scale) were used to create this new dataset.

**For this layer only those items found within the map extents are displayed in the legend.

If you have any questions, or would like more information please contact:
 Erin Kelly, Manager, Watershed Programs and Partnerships
 Land & Water Division, Environment and Natural Resources
 Government of the Northwest Territories
 P.O. Box 1320, Yellowknife, NT X1A 2L9
 Phone: 867-920-3258 Fax: 867-873-4229 Email: erin_kelly@gov.nt.ca
 This Map was produced by the NWT Centre for Geomatics, is not a legal description and is meant for visualization purposes only.
 NWTGCG Project ID: MXD-197. November 16, 2011.