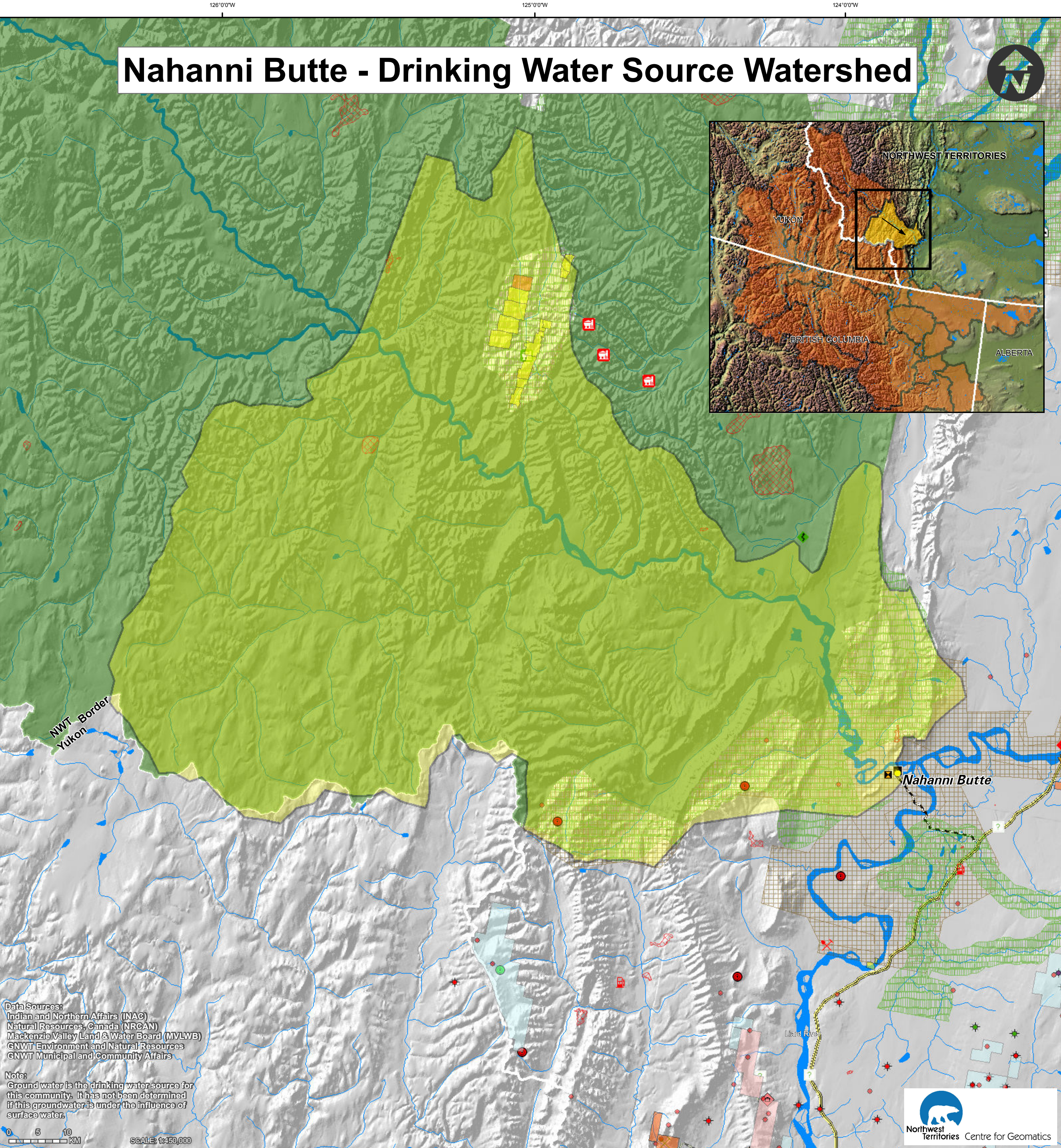
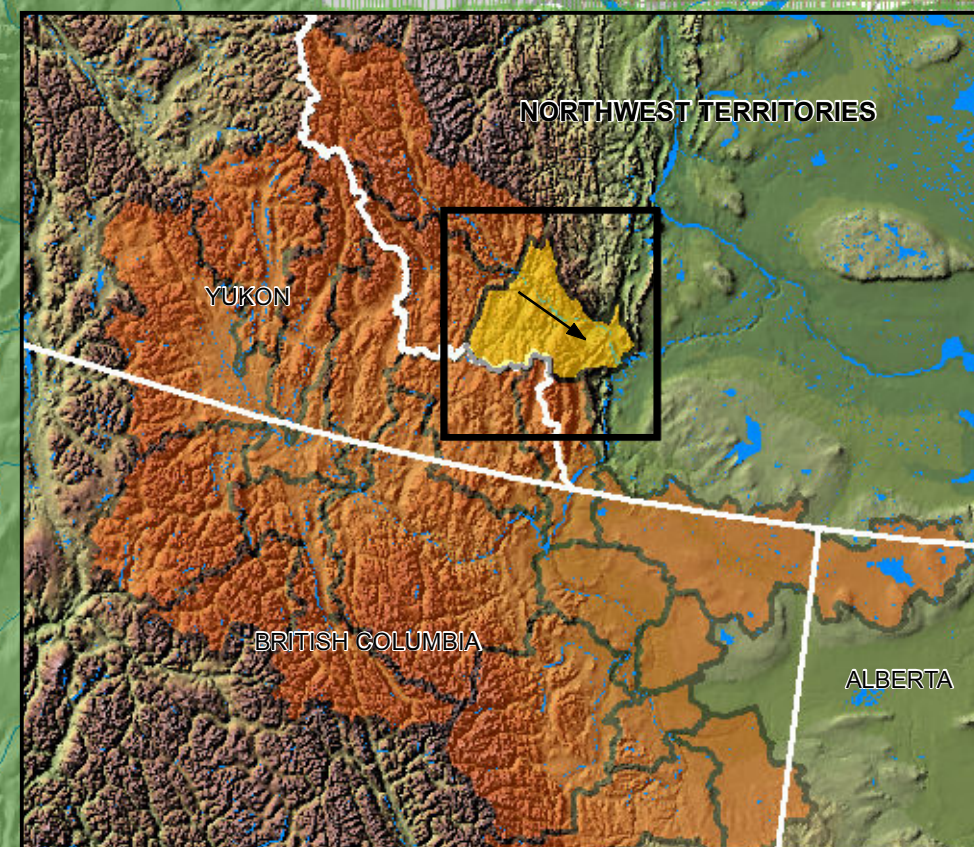


Nahanni Butte - Drinking Water Source Watershed



Data Sources:
Indian and Northern Affairs (INAC)
Natural Resources Canada (NRCAN)
Mackenzie Valley Land & Water Board (MVLWB)
GNWT Environment and Natural Resources
GNWT Municipal and Community Affairs

Note:
Ground water is the drinking water source for this community. It has not been determined if this groundwater is under the influence of surface water.

0 5 10
KM
SCALE: 1:250,000

Community Drinking Water <ul style="list-style-type: none">*Community Source WatershedUpstream Watershed AreasFlow DirectionCommunity Water Intake LocationsWaste Water and Sewage Outflow	Mining Developments As of November 2009 <ul style="list-style-type: none">Non ProducingProducer Active Mineral Tenure As of August 2011 <ul style="list-style-type: none">Mining LeasesMining ClaimsProspecting Permits	Oil and Gas Well Sites Status as of July 2010: <ul style="list-style-type: none">Non ProducingProducer Oil and Gas Rights Status as of April, 2011 <ul style="list-style-type: none">Exploration LicenceProduction LicenceSignificant Discovery Licence Oil and Gas Pipelines <ul style="list-style-type: none">Existing Pipeline	Tourism <ul style="list-style-type: none">LodgesTerritorial ParkTerritorial Park Area Forest Fires <ul style="list-style-type: none">Fires 2000-2010	Development and Activities As of June 2011:** <ul style="list-style-type: none">Camp-Not ActiveFuel Storage-Not ActiveMining Exploration-ActiveMining Exploration-Not ActiveMiscellaneous -ActiveMiscellaneous -Not ActiveMunicipal-ActiveMunicipal-Not ActiveOil and Gas-ActiveOil and Gas-Not Active	<ul style="list-style-type: none">Oil and Gas-Under ReviewPipeline-ActivePipeline-Not ActiveQuarrying-ActiveQuarrying-Not ActiveRoad Private-ActiveRoad Public-ActiveRoad Public-Not ActiveSeismic-ActiveSeismic-Not ActiveWoods Operations-Not Active	Conservation Areas and Interim Measures Agreement Land Withdrawals <ul style="list-style-type: none">Established Protected AreasProposed Protected Areas with Interim Land WithdrawalProposed Protected Areas No Land WithdrawalApproved Land Use Plan Conservation ZonesDraft Land Use Plan Conservation ZonesInterim Measures Agreement Land Withdrawals	Base Data <ul style="list-style-type: none">Community BoundaryHighwayWinterFerry CrossingFirst Nation Reserves
---	--	---	--	--	--	--	---

*Community Source Watersheds: Each community's drinking water source watershed was mapped at a scale of 1:250,000. Information from Satellite imagery, 1:250,000 and 1:500,000 scale topographic data and the National Scale Frameworks Hydrology - Drainage Network data (1:1,000,000 scale) were used to create this new dataset.

**For this layer only those items found within the map extents are displayed in the legend.

If you have any questions, or would like more information please contact:
Erin Kelly, Manager, Watershed Programs and Partnerships
Land & Water Division, Environment and Natural Resources
Government of the Northwest Territories
P.O. Box 1320, Yellowknife, NT X1A 2L9
Phone: 867-920-3258 Fax: 867-873-4229 Email: erin_kelly@gov.nt.ca

This Map was produced by the NWT Centre for Geomatics, is not a legal description and is meant for visualization purposes only.
NWTGCS Project ID: MXD-214, December 12, 2011.