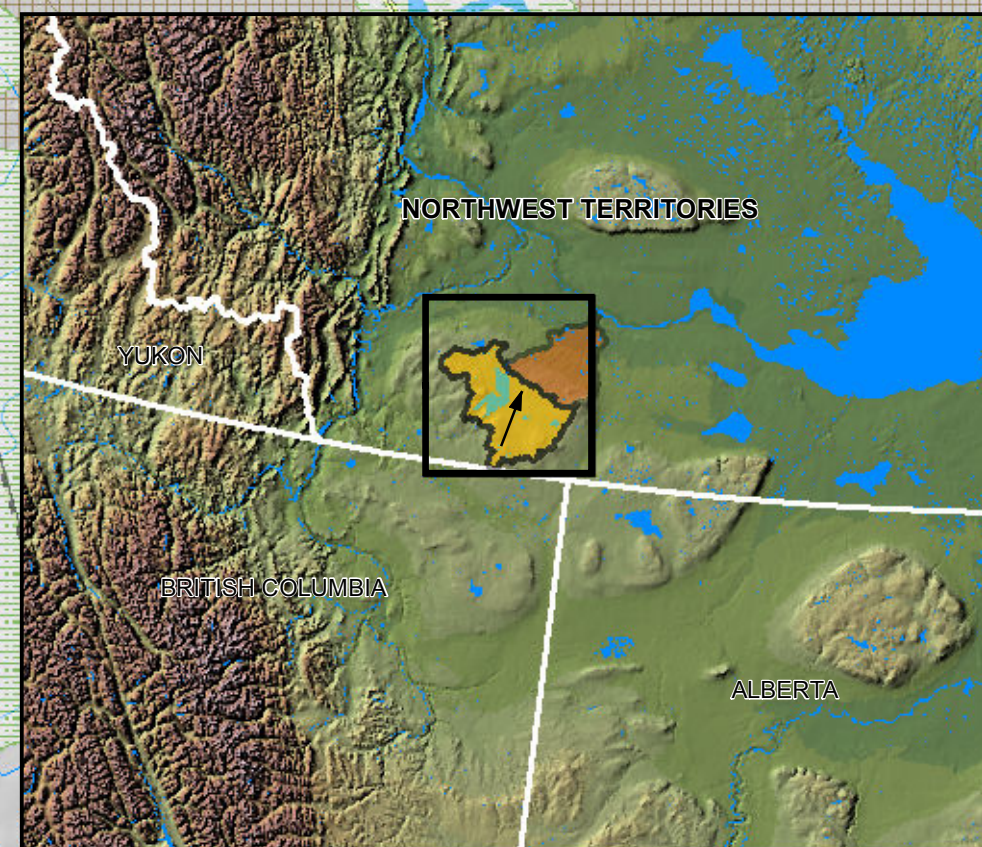


# Trout Lake - Drinking Water Source Watershed



Data Sources:  
Indian and Northern Affairs (INAC)  
Natural Resources Canada (NRCan)  
Mackenzie Valley Land & Water Board (MVLWB)  
GNWT Environment and Natural Resources  
GNWT Municipal and Community Affairs

NWT/British Columbia Border



## Community Drinking Water

- \*Community Source Watershed
- Upstream Watershed Areas
- Flow Direction
- Community Water Intake Locations
- Waste Water and Sewage Outflow

## Mining Developments

As of November, 2009

- Non Producing
- Producer

## Active Mineral Tenure

As of August, 2011

- Mining Leases
- Mining Claims
- Prospecting Permits

## Oil and Gas Well Sites

Status as of July, 2010:

- Non Producing
- Producer

## Oil and Gas Rights

Status as of April, 2011

- Exploration Licence
- Production Licence
- Significant Discovery Licence

## Oil and Gas Pipelines

- Existing Pipeline

## Tourism

- Lodges
- Territorial Park
- Territorial Park Area
- Forest Fires
- Fires 2000-2010

## Development and Activities

As of June, 2011:\*\*

- Fuel Storage-Active
- Mining Exploration-Active
- Miscellaneous -Active
- Miscellaneous-Not Active

## Oil and Gas-Not Active

- Quarrying-Active
- Quarrying-Not Active
- Road Public-Active
- Seismic-Not Active
- Woods Operations-Not Active

## Conservation Areas and Interim

Measures Agreement Land Withdrawals

- Established Protected Areas
- Proposed Protected Areas with Interim Land Withdrawal
- Proposed Protected Areas No Land Withdrawal
- Approved Land Use Plan Conservation Zones
- Draft Land Use Plan Conservation Zones
- Interim Measures Agreement Land Withdrawals

## Base Data

- Community Boundary
- Highway
- Winter
- Ferry Crossing
- First Nation Reserves

\*Community Source Watersheds: Each community's drinking water source watershed was mapped at a scale of 1:250,000. Information from Satellite imagery, 1:250,000 and 1:50,000 scale topographic data and the National Scale Frameworks Hydrology - Drainage Network data (1:1,000,000 scale) were used to create this new dataset.

\*\*For this layer only those items found within the map extents are displayed in the legend.

If you have any questions, or would like more information please contact:  
Erin Kelly, Manager, Watershed Programs and Partnerships  
Land & Water Division, Environment and Natural Resources  
Government of the Northwest Territories  
P.O. Box 1320, Yellowknife, NT X1A 2L9  
Phone: 867-920-3258 Fax: 867-873-4229 Email: erin\_kelly@gov.nt.ca  
  
This Map was produced by the NWT Centre for Geomatics, is not a legal description and is meant for visualization purposes only.  
NWTG Project ID: MXD-226 December 12, 2011.