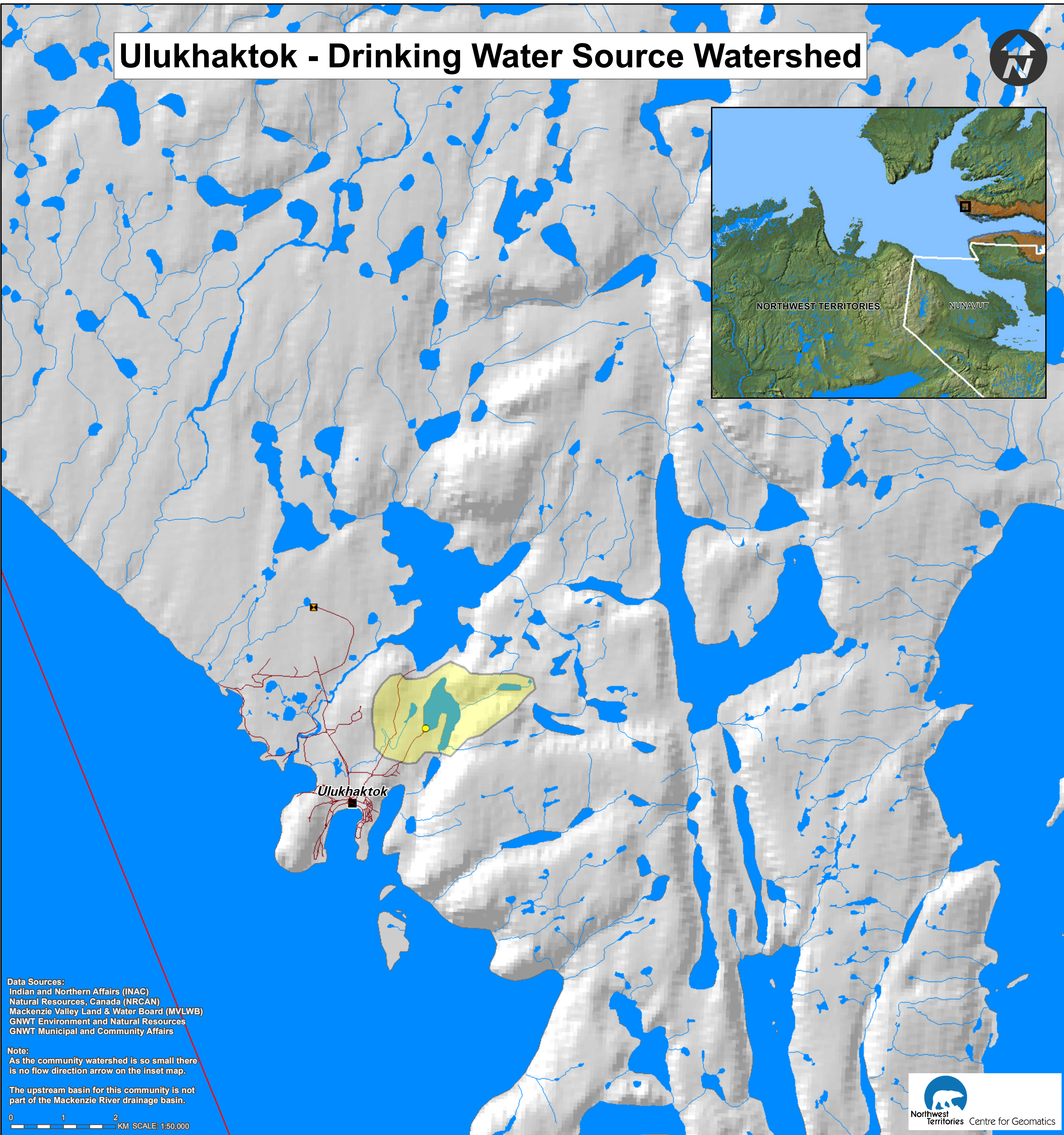


# Ulukhaktok - Drinking Water Source Watershed



**Data Sources:**  
Indian and Northern Affairs (INAC)  
Natural Resources, Canada (NRCA)  
Mackenzie Valley Land & Water Board (MVLWB)  
GNWT Environment and Natural Resources  
GNWT Municipal and Community Affairs

**Note:**  
As the community watershed is so small there is no flow direction on the inset map.

The upstream basin for this community is not part of the Mackenzie River drainage basin.

0 1 2 KM SCALE: 1:50,000



## Community Drinking Water

- \*Community Source Watershed
- Upstream Watershed Areas
- Community Water Intake Locations
- Waste Water and Sewage Outflow

## Mining Developments

As of November, 2009

- Non Producing
- Producer

## Active Mineral Tenure

As of August, 2011

- Mining Leases
- Mining Claims
- Prospecting Permits

## Oil and Gas Well Sites

Status as of July, 2010:

- Non Producing
- Producer

## Oil and Gas Rights

Status as of April, 2011

- Exploration Licence
- Production Licence
- Significant Discovery Licence

## Oil and Gas Pipelines

- Existing Pipeline
- Territorial Park Area
- Territorial Park

## Tourism

- Lodges

## Forest Fires

- Fires 2000-2010

## Conservation Areas and Interim

Measures Agreement Land Withdrawals

- Established Protected Areas
- Proposed Protected Areas with Interim Land Withdrawal
- Proposed Protected Areas No Land Withdrawal
- Approved Land Use Plan Conservation Zones
- Draft Land Use Plan Conservation Zones
- Interim Measures Agreement Land Withdrawals

## Base Data

- Community Boundary
- Ferry Crossing
- Highway
- Winter
- First Nation Reserves

\*Community Source Watersheds: Each community's drinking water source watershed was mapped at a scale of 1:250,000. Information from Satellite imagery, 1:250,000 and 1:50,000 scale topographic data and the National Scale Frameworks Hydrology - Drainage Network data (1:1,000,000 scale) were used to create this new dataset.

Note - For the map extents there were no Developments and Activities to be displayed as of June, 2011.

If you have any questions, or would like more information please contact:  
Erin Kelly, Manager, Watershed Programs and Partnerships  
Land & Water Division, Environment and Natural Resources  
Government of the Northwest Territories  
P.O. Box 1320, Yellowknife, NT X1A 2L9  
Phone: 867-920-3258 Fax: 867-873-4229 Email: erin\_kelly@gov.nt.ca

This Map was produced by the NWT Centre for Geomatics, is not a legal description and is meant for visualization purposes only.  
NWTG Project ID: MXD-211. April 24, 2013.