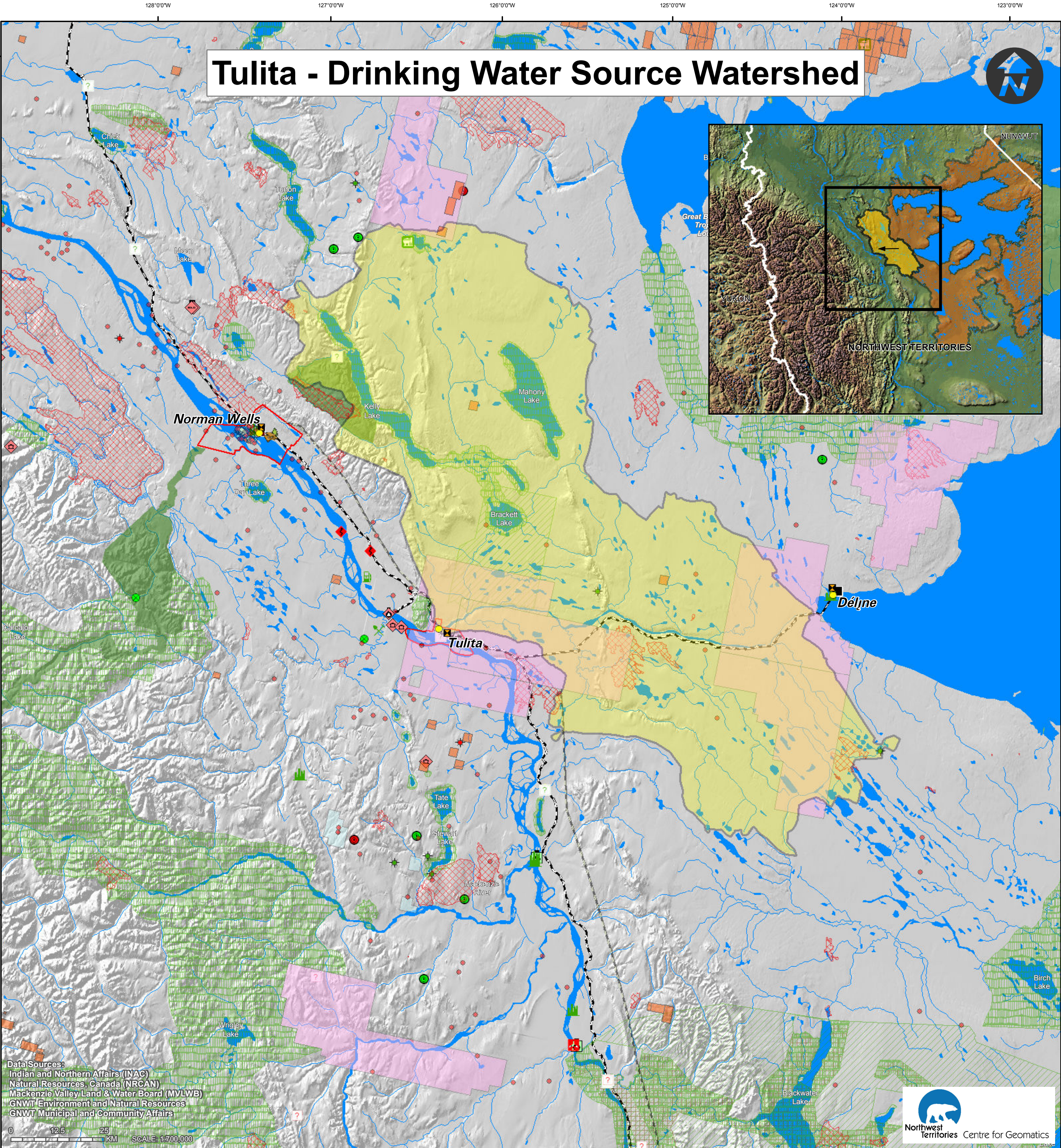
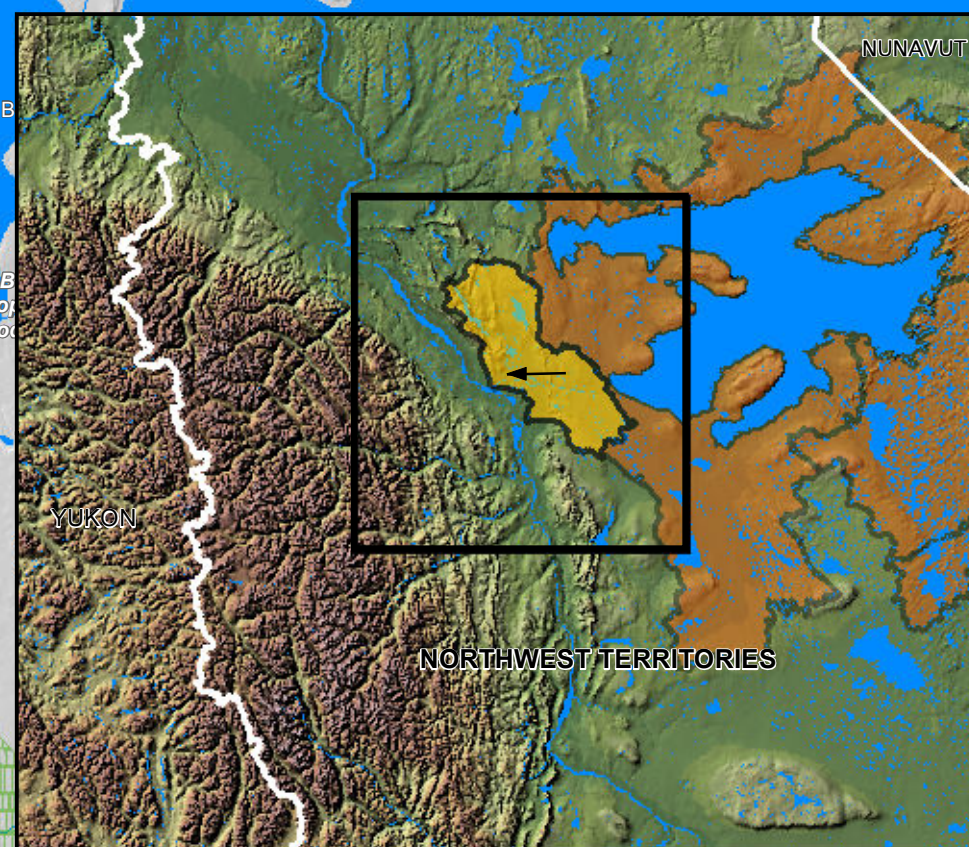


Tulita - Drinking Water Source Watershed



Data Sources:
Indian and Northern Affairs (INAC)
Natural Resources Canada (NRCA)
Mackenzie Valley Land & Water Board (MVLWB)
GNWT Environment and Natural Resources
GNWT Municipal and Community Affairs



Community Drinking Water

- *Community Source Watershed
- Upstream Watershed Areas
- Flow Direction
- Community Water Intake Locations
- Waste Water and Sewage Outflow

Mining Developments

- As of November 2009
- Non Producing
- Producer

Active Mineral Tenure

- As of August 2011
- Mining Leases
- Mining Claims
- Prospecting Permits

Oil and Gas Well Sites

- Status as of July 2010:
- Non Producing
- Producer

Oil and Gas Rights

- Status as of April 2011
- Exploration Licence
- Production Licence
- Significant Discovery Licence

Oil and Gas Pipelines

- Existing Pipeline

Tourism

- Lodges
- Territorial Park
- Territorial Park Area

Forest Fires

- Fires 2000-2010

Development and Activities

As of June 2011:**

- Airstrip-Not Active
- Fuel Storage-Active
- Fuel Storage-Not Active
- Geotechnical-Active
- Mining Exploration-Active
- Miscellaneous -Active
- Miscellaneous-Not Active
- Municipal-Active
- Oil and Gas-Active
- Oil and Gas-Not Active
- Pipeline-Not Active
- Quarrying-Active
- Research Projects-Not Active
- Road Public-Active
- Road Public-Not Active
- Road Public-Under Review
- Seismic-Active
- Seismic-Not Active
- Staging Area-Active
- Staging Area-Not Active

Conservation Areas and Interim

Measures Agreement Land Withdrawals

- Established Protected Areas
- Proposed Protected Areas with Interim Land Withdrawal
- Proposed Protected Areas No Land Withdrawal
- Approved Land Use Plan Conservation Zones
- Draft Land Use Plan Conservation Zones
- Interim Measures Agreement Land Withdrawals

Base Data

- Community Boundary
- Winter
- Ferry Crossing
- First Nation Reserves

*Community Source Watersheds: Each community's drinking water source watershed was mapped at a scale of 1:250,000. Information from Satellite imagery, 1:250,000 and 1:500,000 scale topographic data and the National Scale Frameworks Hydrology - Drainage Network data (1:1,000,000 scale) were used to create this new dataset.

**For this layer only those items found within the map extents are displayed in the legend.

If you have any questions, or would like more information please contact:
Erin Kelly, Manager, Watershed Programs and Partnerships
Land & Water Division, Environment and Natural Resources
Government of the Northwest Territories
P.O. Box 1320, Yellowknife, NT X1A 2L9
Phone: 867-920-3258 Fax: 867-873-4229 Email: erin_kelly@gov.nt.ca

This Map was produced by the NWT Centre for Geomatics, is not a legal description and is meant for visualization purposes only.
NWTCC Project ID: MXD-210, December 1, 2011.